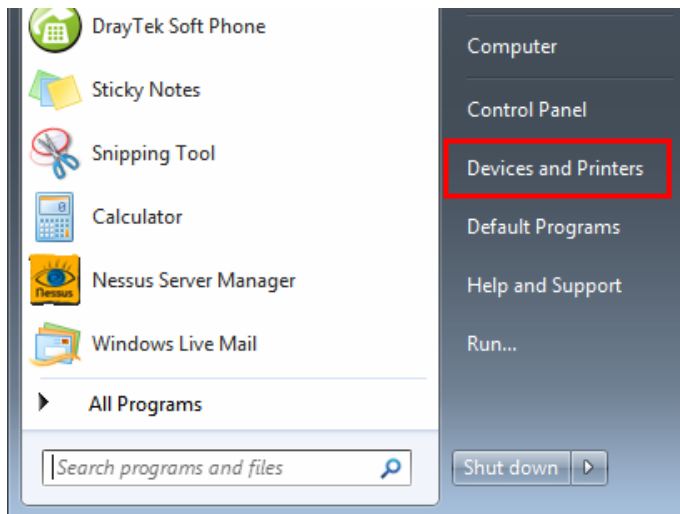
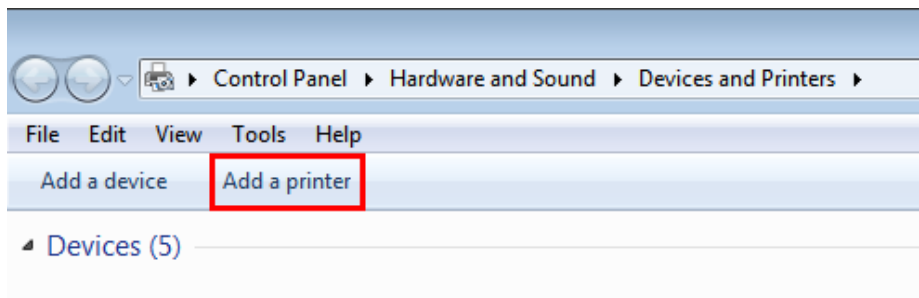


How to add a new printer in Windows7

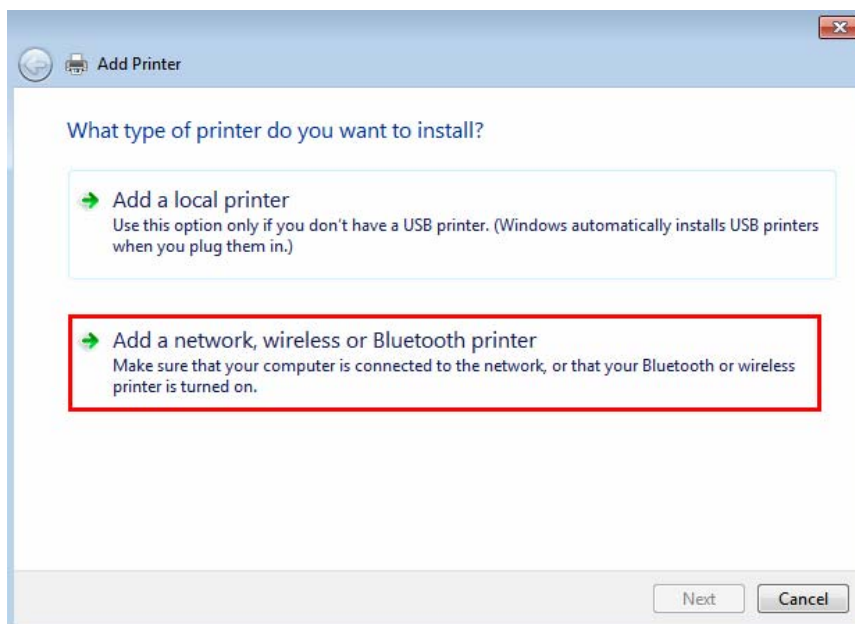
1. Choose **Start >>Devices and Printers** from the menu bar on the left bottom side.



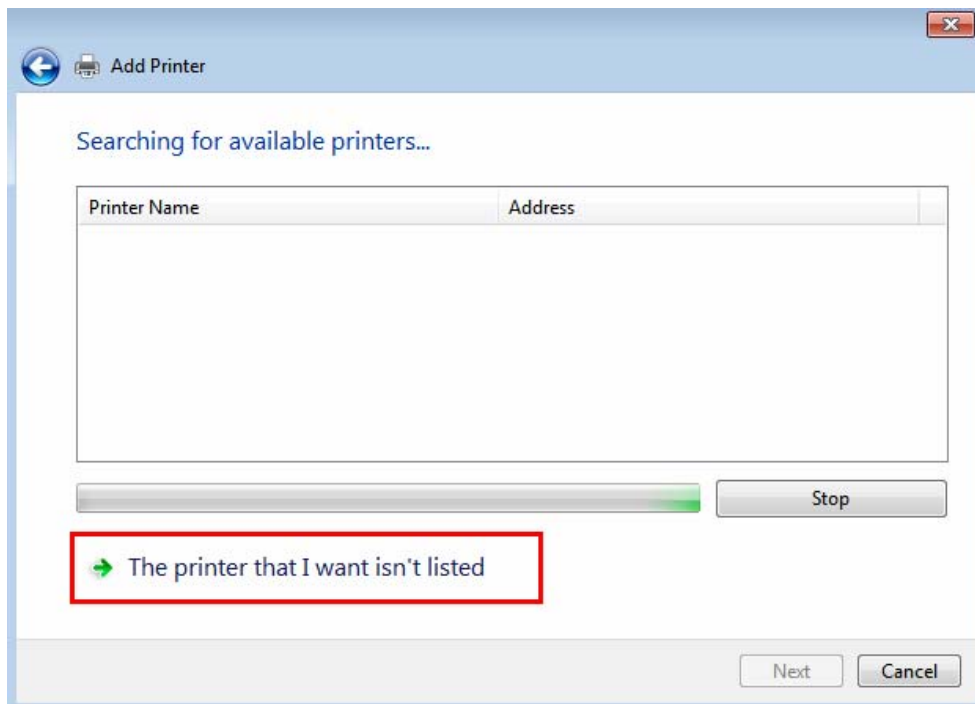
2. Click **Add a printer**.



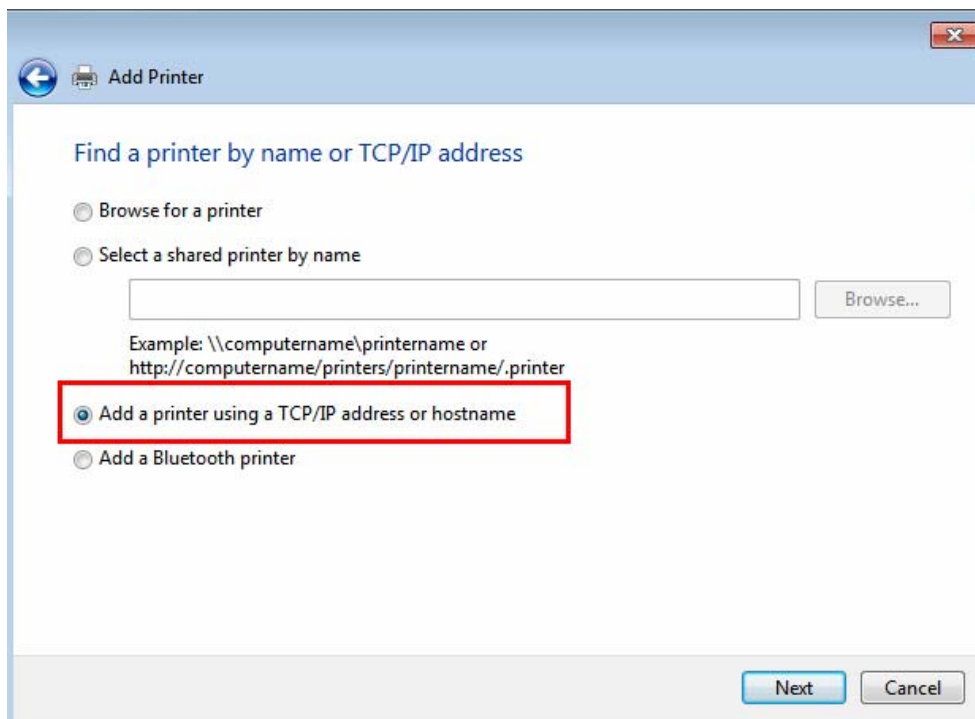
3. In the following window, choose **Add a network, wireless or Bluetooth printer**.



4. Stop auto-searching and specify the printer manually. If the one you want isn't listed on the screen, please click **The printer that I want isn't listed**.



5. Choose **Add a printer using a TCP/IP address or hostname** and click **Next**.



6. Choose **TCP/IP Device** as **Device Type** and type the IP address of the printer. Then, click **Next**. Note that the default IP address for the printer is Vigor LAN Gateway IP.

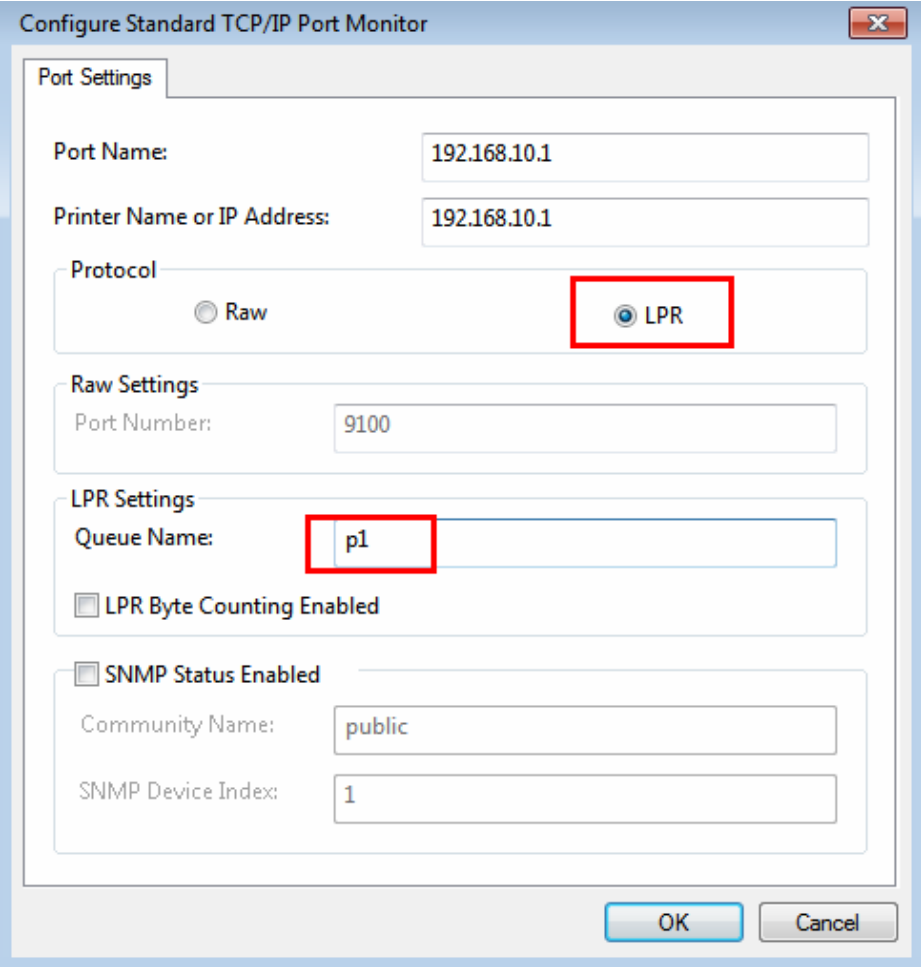
The screenshot shows the 'Add Printer' wizard window. The title bar says 'Add Printer'. The main heading is 'Type a printer hostname or IP address'. There are three input fields: 'Device type:' with a dropdown menu set to 'TCP/IP Device', 'Hostname or IP address:' with the text '192.168.10.1', and 'Port name:' with the text '192.168.10.1'. A checkbox labeled 'Query the printer and automatically select the driver to use' is checked. At the bottom right, there are 'Next' and 'Cancel' buttons.

7. Choose **Custom** and click **Setting** for configuring the detailed settings.

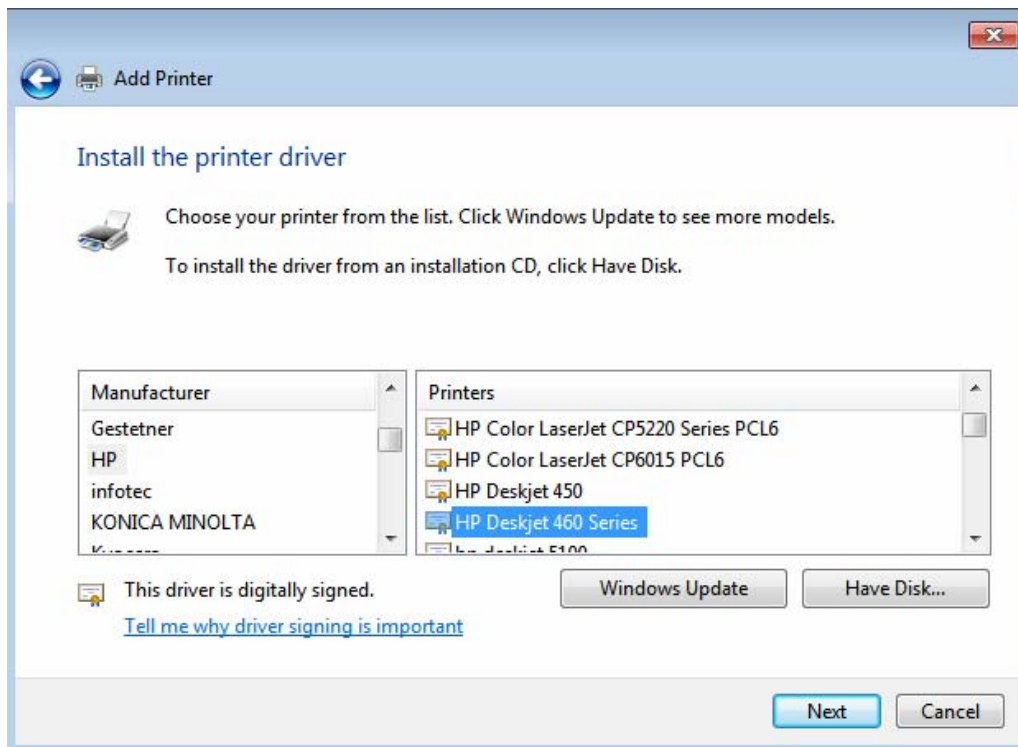
The screenshot shows the 'Add Printer' wizard window at the 'Additional port information required' step. The text reads: 'The device is not found on the network. Be sure that:'. Below this is a numbered list: 1. The device is turned on. 2. The network is connected. 3. The device is properly configured. 4. The address on the previous page is correct. Further text says: 'If you think the address is not correct, click Back to return to the previous page. Then correct the address and perform another search on the network. If you are sure the address is correct, select the device type below.' There are two radio buttons: 'Standard' (unselected) and 'Custom' (selected). The 'Standard' option has a dropdown menu showing 'Generic Network Card'. The 'Custom' option has a 'Settings...' button highlighted with a red box. At the bottom right, there are 'Next' and 'Cancel' buttons.

8. Set **LPR** as **Protocol**; type **p1** (the “1” means number “one”, not letter “l”) in the field of

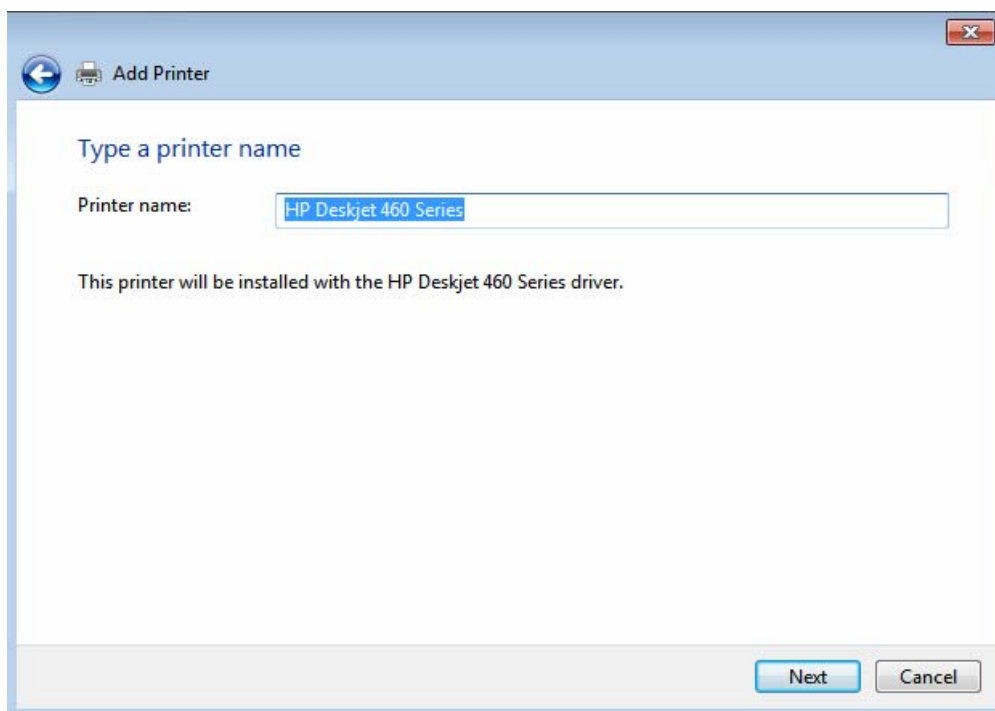
Queue Name. Then, click **OK**. At that time, the screen will be back to Step 7. Click **Next**, please.



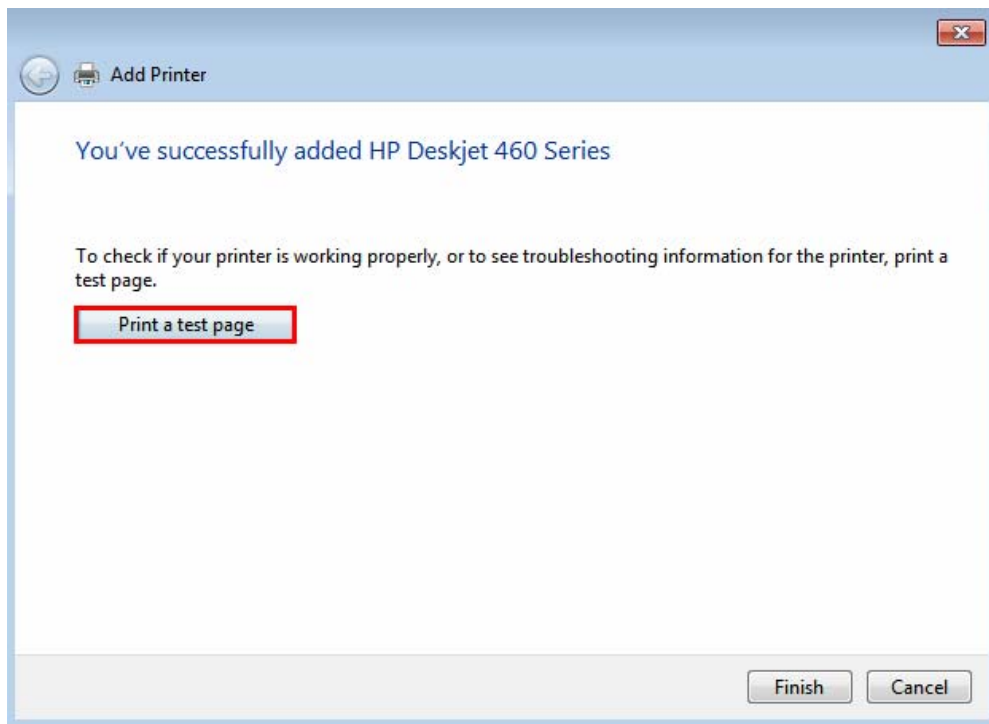
9. Choose the printer manufacturer and specify the printer you want to install the drivers. Click **Next**.



10. Type the name of the printer for identification. Then, click **Next**.



11. Print a test page by clicking the button to confirm that the printer installation is successful. Click **Finish** to exit the printer installation wizard.



12. Now the new added icon will be shown on the screen of **Devices and Printers**.